

25 JUNE 1958

SUPERSEDING
MIL-S-4390A(USAF)
1 NOVEMBER 1951
MIL-S-16456(S&A)
4 JUNE 1951

MILITARY SPECIFICATION

SHIRT, WOMAN'S (CHAMBRAY)

This specification has been approved by the Department of Defense and is mandatory for use by the Departments of the Army, the Navy, and the Air Force.

1. SCOPE

1.1 Scope. This specification covers the requirements for a chambray shirt for women of the Army, the Navy, and the Air Force.

1.2 Classification. The shirt shall be of one type in the following classes and sizes, as specified (see 6.2).

Class 1 — Chambray, 4.45 ounces per square yard.

Class 2 — Chambray, 3.0 ounces per square yard.

Sizes — 8, 10, 12, 14, 16, 18, 20, 38 (22), 40 (24), 42 (26) 44 (28).

2. APPLICABLE DOCUMENTS

2.1 The following specifications and standards, of the issue in effect on date of invitation for bids, form a part of this specification:

SPECIFICATIONS

FEDERAL

- V-B-871 — Buttons.
- V-T-276 — Thread; Cotton.
- UU-P-268 — Paper, Kraft, Wrapping.

- CCC-C-231 — Chambray.
- CCC-T-191 — Textile Test Methods.
- DDD-S-751 — Stitches; Seams; and Stitching.
- PPP-B-636 — Boxes, Fiber.
- PPP-T-60 — Tape; Pressure Sensitive Adhesive, Waterproof, — For Packaging and Sealing.

MILITARY

- MIL-C-299 — Cloth, Cotton, Print.
- MIL-C-10293 — Cloth, Cotton, Chambray.
- MIL-L-15040 — Labels, Garment.
- MIL-T-16338 — Tickets, Cap and Hat.

STANDARDS

MILITARY

- MIL-STD-105 — Sampling Procedures and Tables for Inspection by Attributes.
- MIL-STD-129 — Marking for Shipment and Storage.

(Copies of specifications and standards required by contractors in connection with specific procurement functions should be obtained from the procuring activity or as directed by the contracting officer.)

3. REQUIREMENTS

3.1 Guide sample. Samples are furnished as a guide only (see 6.2). Variations from the specification may appear in the sample, in which case the specification shall govern. Except for such variations the design, quality, and workmanship, in all respects not covered by this specification, shall be equal to the guide sample.

3.2 Sample approval. Unless otherwise specified, the contractor shall submit to the contracting officer one finished shirt cut in accordance with government furnished patterns and conforming to the requirements of design, construction, workmanship and appearance of this specification (see 6.2).

3.3 Materials.

3.3.1 Cloth, cotton, chambray.

3.3.1.1 Class 1. The chambray shall conform to the requirements for class C, of Specification CCC-C-231, except that the color of the warp shall be as specified (see 6.2) and the amount of nonfibrous materials shall not exceed two percent when tested as specified (see 4.4). The chambray shall meet the shrinkage and color fastness requirements specified, and in addition shall show good color fastness to crocking, perspiration and chlorine bleaching when tested as specified (see 4.4). The color shall approximate the shade of the standard sample (see 3.1).

3.3.1.2 Class 2. The chambray shall conform to the requirements of Specification MIL-C-10293, except that the color shall be blue, USAF, Shade No. 515.

3.3.2 Buttons. The buttons shall be 22-line, and shall conform to the requirements for type II, class D, subclass D-1a, melamine formaldehyde, figure 2, style 5 of Specification V-B-871. The color of the buttons shall be white.

3.3.3 Thread, cotton. Unless otherwise specified, the thread shall be white, and shall

conform to the requirements for type IA2, 3 cord, ticket numbers 40 and 60 of Specification V-T-276.

3.3.4 Ticket. The size ticket shall conform to the requirements of MIL-T-16338.

3.3.5 Labels. The labels shall be made of cloth conforming to the requirements for type III, size 3 of Specification MIL-L-15040 or applied to the garment by means of decalomania marking by heat and pressure or by stamping. The labels shall be printed or transcribing black indelible ink. A margin of 3/16 inch for cloth labels shall be allowed on each four cloth labels shall be allowed on each four sides for the purpose of sewing. The imprint of the marking shall show good color-fastness and shall be legible after ten cycles of washing when tested as specified in 4.4.

3.3.5.1 Legend. The following information shall be provided on the contractor's label in letters and numerals not less than 3/32 inch in height except the nomenclature which shall be not less than 11/64 inch in height, for example:

(NOMENCLATURE)

MIL-S

Stock No.

Manufacturers Name

Contract or Order No.

Size

3.4 Description. The shirt shall have a notched convertible collar with pointed ends, short sleeves finished with a hem, a buttoned front closure with six buttons, a breast patch pocket on left front, and a stitched pleat-dart at each shoulder in back. (See figure 1).

3.5 Patterns. Standard patterns will be furnished by the Government procuring activity concerned to the contractor for cutting working patterns (see 6.2). The working patterns shall be identical to the Government patterns. Neither the Government patterns nor the working patterns shall be altered in any way.

3.5.1 *List of pattern parts.* The list of pattern parts shall comprise the specified material and number of cut parts listed below:

Pattern	Cut parts
Front	2
Back	1
Sleeves	2
Collar	1
Pocket	1

3.6 *Stitches, seams, stitching.* The stitch, seam, and stitching types specified herein shall conform to the requirements of Specification DDD-S-751. Unless otherwise specified, ends of seams shall be even; double stitched seams, edge stitching, and stitching along sides and bottom of patch pocket shall be $\frac{1}{4}$ inch gauge; the stitching on seams or hem next to a turned under edge, along fold of a pleat-dart and

edges of label shall be $\frac{1}{16}$ to $\frac{1}{8}$ inch from edge. The ends of a line of stitching not crossed by another stitching line shall be back-tacked for $\frac{1}{4}$ to $\frac{3}{8}$ inch. Where 401 stitch type is used the looper (under) thread shall be on the inside of garment. The stitch types, threads, and number of stitches shall be as shown in table I.

3.7 *Construction.* The shirts shall be constructed in accordance with Government patterns, notches and markings therein, and all the operations shown in table II. The contractor may vary the sequence of operations provided the finished shirts are identical with those produced by following the exact sequence as shown. Unless otherwise specified, measurements are based on the finished shirt size 14.

TABLE I. *Stitch types, threads, and number of stitches*

Operations	Stitch types	Threads		No. of stitches
		Needle	Lower or looper	
Stitching—general double stitched seams	301	60/3	60/3	14-18
	301 or 401	60/3	60/3	14-18
Buttonholes— $\frac{5}{8}$ inch	101 or	40/3	40/3	46 per buttonhole
	304	40/3		46 per buttonhole
Bartacks— $\frac{1}{2}$ inch	304 or 404	40/3	40/3	28 per bartack
Button sewing	101 or	40/3	40/3	21 per button
	301	40/3		15-16 per button

TABLE II. *Construction*

Operations	Seam or stitching types
<p>1. <i>Cutting</i></p> <p>1.1 Cut component parts in accordance with instructions and directional lines noted on the Government patterns. All component parts of each shirt shall be cut from the same piece of fabric. The front edge of front pattern (inner edge of facing) may be placed along the selvage of the material; if not, add $\frac{5}{16}$ ($\pm \frac{1}{16}$) inch for hemming the edge.</p>	
<p>2. <i>Replacement of damaged parts</i></p> <p>2.1 Any part containing damages, holes, or seriously weakening defects such as smashes, multiple floats and slubs likely to develop into a hole, shall be replaced at time of cutting.</p>	

TABLE II. Construction (Cont'd)

Operations	Seam or stitching types																
2. <i>Replacement of damaged parts (Continued)</i>																	
2.2 Any part damaged during the manufacturing process by needle chews, which may be expected to develop into a hole, scissor or knife cuts, tears, holes, mends, burns, or large exposed drill holes shall be replaced.																	
3. <i>Shade Marking</i>																	
3.1 Mark all component parts to ensure a uniform shade.																	
3.2 The use of fastening devices or sew-on tickets for shade marking is prohibited.																	
3.3 The use of pad numbering machines, rubber stamp, or pencil is acceptable provided the numbering does not show through to the outer side of the garment and wherever possible, numbers shall be covered by seam allowance.																	
4. <i>Prepare shirt fronts</i>																	
4.1 <i>Make and attach patch pocket</i>																	
4.1.1 Stitch a 1 ($\pm \frac{1}{8}$) inch wide hem finished in top of pocket.	EFb-1																
4.1.2 Turn edges of pocket under and stitch pocket to left front, the pocket centered across markings indicated on pattern. The pocket may be precreased.	LSd-1																
4.1.3 The dimensions of finished pocket shall be as follows:																	
<table border="1"> <thead> <tr> <th>Sizes</th> <th>Width (Inches)</th> <th>Depth (Inches)</th> <th>Tolerances (Inches)</th> </tr> </thead> <tbody> <tr> <td>8-10</td> <td>4$\frac{1}{4}$</td> <td>4$\frac{1}{2}$</td> <td>$\pm \frac{1}{4}$</td> </tr> <tr> <td>12-18</td> <td>4$\frac{1}{2}$</td> <td>4$\frac{1}{2}$</td> <td>$\pm \frac{1}{4}$</td> </tr> <tr> <td>20-44</td> <td>4$\frac{3}{4}$</td> <td>4$\frac{1}{2}$</td> <td>$\pm \frac{1}{4}$</td> </tr> </tbody> </table>	Sizes	Width (Inches)	Depth (Inches)	Tolerances (Inches)	8-10	4 $\frac{1}{4}$	4 $\frac{1}{2}$	$\pm \frac{1}{4}$	12-18	4 $\frac{1}{2}$	4 $\frac{1}{2}$	$\pm \frac{1}{4}$	20-44	4 $\frac{3}{4}$	4 $\frac{1}{2}$	$\pm \frac{1}{4}$	
Sizes	Width (Inches)	Depth (Inches)	Tolerances (Inches)														
8-10	4 $\frac{1}{4}$	4 $\frac{1}{2}$	$\pm \frac{1}{4}$														
12-18	4 $\frac{1}{2}$	4 $\frac{1}{2}$	$\pm \frac{1}{4}$														
20-44	4 $\frac{3}{4}$	4 $\frac{1}{2}$	$\pm \frac{1}{4}$														
4.2 <i>Facing</i>																	
4.2.1 If inner edge of facing is a raw edge, turn edge under $\frac{5}{16}$ ($\pm \frac{1}{16}$) inch and stitch $\frac{1}{16}$ to $\frac{1}{8}$ inch from fold. If inner edge of facing is selvage, no turning under and stitching is required.	EFa-1																
4.2.2 The finished facing shall measure $\frac{3}{4}$ ($\pm \frac{1}{4}$) inch wide at the shoulder seam for all sizes; 3 $\frac{1}{2}$ ($\pm \frac{1}{4}$) inches wide at the hem for size 14 and each successive size up and down from size 14 shall grade approximately $\frac{1}{16}$ inch.																	
4.3 <i>Attach label</i>																	
4.3.1 Stitch the four edges of a garment label to the face side of left facing, 3 ($\pm \frac{1}{2}$) inches from the bottom with bottom of label along inner edge of facing.	LSd-1 and SSa-1																
5. <i>Prepare back</i>																	
5.1 Fold a vertical pleat-dart in each shoulder of shirt back as indicated on the pattern with the pleat-dart facing the armhole and stitch edge of pleat-dart. In the finished shirt the pleat-dart shall be $\frac{3}{4}$ inch deep, the stitched portion shall measure 2 $\frac{1}{2}$ ($\pm \frac{1}{4}$) inches.	OSf-1																
6. <i>Join shoulder seam</i>																	
6.1 Double topstitch the shoulder seam with back lapped over front.	LSc-2																
7. <i>Make collar</i>																	
7.1 Fold collar in half lengthwise and stitch ends $\frac{1}{4}$ inch gauge. Turn and edge stitch ends and outer edge of collar. Edge stitching on collar may be done continuously with edge stitching on front edges of shirt (see operation 8.4).	SSE-2 and OSf-1																

TABLE II. *Construction (Cont'd)*

Operations	Seam or stitching types
8. <i>Attach collar</i>	
8.1 Fold front facing to outside of shirt front at marking indicated on pattern and insert neck-edge of both plies of collar under the facing with end of collar at marking indicated on pattern; stitch $\frac{3}{8}$ inch gauge, the stitching extending from fold at front to back edge of shoulder seam. Clip seam at intervals.	SSa-1
8.2 Stitch, $\frac{3}{8}$ inch gauge, the neck-edge of under collar to back neck of shirt between shoulder seams. Clip neck seam at both ends of line of stitching. Turn facing against inside of shirt.	BSg-2(a)
8.3 Turn under and stitch the shoulder edge of facing even with back edge of shoulder seam on each side, and neck-edge of top collar lapped over neck seam between shoulder seams, simultaneously inserting and centering a size ticket.	BSg-2(b) and LSd-1
8.4 Edge stitch the entire length of each front edge of shirt; at the top turn a square corner and connect the top end of stitching with stitching on collar.	OSf-1 and SSE-2
8.5 In the finished shirt the front ends of collar shall measure $3\frac{3}{4}$ ($\pm \frac{1}{4}$) inches, the center back of collar 3 ($\pm \frac{1}{4}$) inches and the notch shall measure $\frac{3}{4}$ ($\pm \frac{1}{8}$) inch.	
9. <i>Set sleeve</i>	
9.1 Double topstitch the sleeve in armhole with body front and back lapped over sleeve.	LSc-2
10. <i>Close sleeve and side seam</i>	
10.1 Double topstitch sleeve and side seam continuously with the back edge lapped over the front.	LSc-2
11. <i>Hem bottom of sleeve and bottom of shirt</i>	
11.1 Stitch a $1\frac{1}{4}$ ($\pm \frac{1}{8}$) inch hem finished in bottom of sleeve.	EFb-1
11.2 Stitch a $\frac{3}{8}$ ($\pm \frac{1}{16}$) inch hem finished in bottom of shirt.	EFb-1
12. <i>Bartacks</i>	
12.1 Stitch a $\frac{1}{2}$ inch vertical bartack, superposed on end of topstitching at each top corner of patch pocket and front only.	
13. <i>Buttonholes</i>	
13.1 Stitch six, $\frac{5}{8}$ -inch straight barred type buttonholes in right front as follows:	
13.1.1 Top buttonhole shall be horizontal, $\frac{1}{2}$ inch from the finished top edge with end of buttonhole $\frac{5}{8}$ inch from front edge.	
13.1.2 Five buttonholes shall be vertical, $\frac{3}{4}$ inch from front edge. Top vertical buttonhole shall be $4\frac{1}{2}$ ($\pm \frac{1}{4}$) inches below the horizontal buttonhole and the top of the remaining buttonholes 3 ($\pm \frac{1}{4}$) inches apart.	
14. <i>Buttons</i>	
14.1 Machine stitch six 22-line buttons on left front, $\frac{3}{4}$ inch from edge, the center of top button corresponding to the horizontal buttonhole, and the centers of the other buttons corresponding to the centers of the vertical buttonholes.	
15. <i>Clean</i>	
15.1 Trim thread ends and remove all loose threads.	
15.2 Remove any spots or soil.	

TABLE II. Construction (Cont'd)

Operations	Seam or stitching types
16. <i>Press</i> 16.1 Press with heated pressing iron or machine the collar, sleeves, backs, and fronts.	
17. <i>Fasten closure</i> 17.1 Button to buttonhole all buttons.	

TABLE III. Sizes and measurements

Sizes	Bust	Waist	Bottom	Collar neck-edge	Center back length	Sleeve inseam	Sleeve width
	A	B	C	D	E	F	G
	<i>inches</i>	<i>inches</i>	<i>inches</i>	<i>inches</i>	<i>inches</i>	<i>inches</i>	<i>inches</i>
8	38	33½	36½	13	25¾	3	12½
10	39½	35	38	13¼	25⅞	3	13
12	41	36½	39½	13⅝	26⅞	3	13½
14	42½	38	41	14	26¼	3	14
16	44	39½	42½	14⅜	26½	3	14½
18	45½	41	44	14¾	26⅝	3	15
20	47	42½	45½	15¼	26¾	3	15½
38 (22)	48½	44	47	15¼	27	3	16
40 (24)	50½	46	49	15⅝	27¼	3	16½
42 (26)	52½	48	51	16	27⅜	3	17
44 (28)	54½	50	53	16⅜	27½	3	17½
Tolerance	± 1	± 1	± 1	± ¼	± ½	± ¼	± ½

3.8 **Sizes and measurements.** Sizes and measurements shall be as shown in table III. Measurements shall be taken as indicated in figure 1. Figures are furnished for information only. To the extent of any inconsistencies between the written specification and the figures, the written specification shall control.

A. *Bust.* Double the measurement taken from folded edge to folded edge at base of armholes with shirt fully buttoned, smoothed out, and in flat position.

B. *Waist.* Double the measurement taken from folded edge to folded edge with shirt fully buttoned, smoothed out and in flat position.

C. *Bottom.* Double the measurement taken across bottom edge of shirt from folded edge to folded edge with shirt fully buttoned, smoothed out and in flat position.

D. *Collar.* Taken across neckline, the width of collar from folded edge to folded edge. Collar shall be smoothed out and in flat position.

E. *Center back length.* Taken along center back from collar seam to bottom edge of shirt.

F. *Sleeve inseam.* Taken from base of armhole along seam to bottom edge of sleeve.

G. *Sleeve width.* Taken along bottom edge of sleeve in flat smoothed out position.

3.9 **Workmanship.** The quality of manufacture shall be controlled to guarantee conformity with the high standard of workmanship required by the acceptable quality levels.

4. QUALITY ASSURANCE PROVISIONS

4.1 **General.** Sampling, inspection and testing of the items covered by this specification

shall be in accordance with 4.2, 4.3 and 4.4. Sampling, inspection and testing of components shall be in accordance with applicable specification for such components. The Government reserves the right to perform sampling, inspection and testing for any requirements of this specification which are not specifically included in 4.2, 4.3 and 4.4.

4.2 Sampling. Sampling shall be conducted in accordance with the requirements of Standard MIL-STD-105 (see 6.2). When MIL-STD-105 specifies an action by the Government, it shall at the option of the Government, be performed either by the Government, or by the contractor under the supervision of the Government inspection.

4.3 Inspection. Inspection shall be made by the Government to determine compliance with this specification (see 6.2). Visual inspection of the item shall be in accordance with the classification of defects (table IV) and acceptable quality levels (4.3.2). The Government reserves the right to classify as a defect any departure from this specification not specifically listed in table IV.

4.3.1 Inspection of components. Inspection of components shall be made in accordance with applicable subsidiary specifications and drawings referenced herein to the extent ap-

plicable, except that this specification shall govern in the event of conflict.

4.3.1.1 Sampling for testing. When any materials are furnished by the Government, such materials shall not be sampled or tested unless specifically requested by the Government. The sample unit for testing of each component shall be the quantity necessary to perform all required tests one time each. Lot sizes are expressed as follows:

Cloth	—	Yards
Buttons	—	Each
Labels	—	Each
Thread	—	Cone or spool

4.3.1.2 Testing criteria. Unless otherwise indicated in applicable specification, the sample unit for testing shall be as follows:

Cloth, cotton, chambray	—	3 yards full width
Thread (Each type)	—	1 cone or spool
Labels	—	10 each

The inspection level for each component shall be L-2 of table VII, Appendix to MIL-STD-105. The number of units for product (sample size) drawn from each lot shall be as shown in table IV of MIL-STD-105. The acceptable quality levels (AQL) for each characteristic tested shall be 6.5 defects per 100 units.

TABLE IV. Classification of defects

Examine	Defect	Major	Minor
Bartacks	Two or more missing or improperly positioned not serving purpose intended.	X	
	One missing or improperly positioned not serving purpose intended.		X
Buttons and buttonholes.	Any buttonhole omitted, badly misplaced or incomplete	X	
	Three or more buttons omitted	X	
	One or two buttons omitted		X
	Any button damaged or out of alignment with corresponding buttonhole causing noticeable bulge when buttoned.		X
	Buttons or buttonholes not type specified		X
Cleanness	Two or more buttons insecurely attached		X
	Spots or stains judged difficult to remove seriously affecting appearance.	X	
	Untrimmed thread ends indicating omission of proper trimming operation.		X

TABLE IV. Classification of defects (Cont'd)

Examine	Defects	Major	Minor
Collar	Twisted, pleated, puckered or otherwise improperly set, seriously affecting appearance or serviceability.	X	
	Collar points noticeably uneven or poorly shaped seriously affecting appearance.	X	
Color			
Material	Color other than specified _____	X	
	Variations of shade within a shirt affecting appearance.		X
Thread } Buttons }	Color other than specified _____	X	
Construction	Any construction detail not conforming to contractor's approved sample, and not classified herein, seriously affecting serviceability.	X	
Facing	Twisted, pleated or puckered seriously affecting appearance or serviceability.	X	
Hem	Any hem omitted _____	X	
Label	Omitted or inscription thereon omitted, incorrect or illegible.	X	
Material	Holes, smashes, multiple floats, large slubs or any other defect seriously affecting serviceability.	X	
Measurements	Any measurement deviating from nominal dimension specified in table of measurements by more than twice the tolerance.	X	
	Any measurement deviating from nominal dimension specified in table of measurements by more than the tolerance but not more than twice the tolerance.		X
Pleat-dart	Misplaced or poorly formed seriously affecting appearance or serviceability.	X	
Pocket	Omitted or misplaced or poorly shaped seriously affecting appearance or serviceability.	X	
Pressing	Omitted _____		X
Seams and stitching			
General	Any seam pleated, twisted or distorted seriously affecting serviceability.	X	
	Any part of shirt caught in an unrelated stitching operation seriously affecting serviceability.	X	
	Any specified stitching omitted seriously affecting serviceability.	X	
	Wrong seam or stitch type _____		X
Open seams	Any open seam, except on bottom hem, ¼ inch _____		X
(Consecutive skipped or broken stitches).	Any open seam, except on bottom hem, over ½ inch _____	X	
Raw edges	Any open seam 1 inch or more on bottom hem _____		X
(Any specified finished edge appearing cut, torn or unfinished).	Any raw edge on outside of shirt ¼ to ½ inch _____		X
Skipped or broken stitches.	Any raw edge on outside of shirt over ½ inch _____	X	
(Skipped or broken stitches not amounting to an open seam).	Any raw edge on inside of shirt over 2 inches _____		X
Stitch tension	Four or more skipped or broken stitches within any 3 inches of stitching on any seam.	X	
	Tight tension evidenced by puckering _____	X	
	(Note. Tight tension shall be classified as a defect only when an open seam or broken stitches result when a moderate strain is applied along the length of the seam by the inspector).		
	Loose tension resulting in a loosely secured seam _____		X

TABLE IV. Classification of defects (Cont'd)

Examine	Defect	Major	Minor
Sleeves	Poorly set sleeve resulting in distortion, excessive puckering or pleating seriously affecting appearance or serviceability.	X	
Workmanship (Damages which may occur during manufacturing process).	Holes, tears, scissors or knife cuts _____	X	
	Any reworked damage seriously affecting appearance or serviceability.	X	
	Exposed drill holes _____	X	

4.3.2 *Acceptable quality levels.* The acceptable quality levels shall be as follows:

Majors 2.5 defects per hundred units

Totals (majors and minors combined) 10.0 defects per hundred units

4.4 **Tests.** Wherever applicable, tests shown in table V and tests in supplemental specifications listed in 2.1 shall be conducted in accordance with methods prescribed in Specification CCC-T-191.

TABLE V. Tests

Tests	Requirement references	Methods
Color fastness to:		
Light	3.3.1.1	5660
Laundering	3.3.1.1	5610
Nonfibrous materials	3.3.1.1	2611
Shrinkage in laundering	3.3.1.1	5556
Color fastness of label marking	3.3.5	5610 ¹

¹ Except that samples shall be subjected to 5 cycles of washings.

5. PREPARATION FOR DELIVERY

5.1 Packaging.

5.1.1 *Level A.* Each buttoned shirt shall be folded in accordance with the commercial shirt fold to an approximate dimension of 15½ inches in length by 11½ inches in width. The folded shirt shall be secured with noncorrosive pins or clips.

5.1.2 *Level C.* The shirts shall be packaged in accordance with the supplier's normal practice.

5.2 Packing.

5.2.1 *Level A.* Twelve (12) domestic shipping container of shirts, packed as specified in 5.2.2, shall be overpacked six in length, one in width, and two in depth, within an export shipping container conforming to the requirements of type I or II, class 2, grade 3, style FOL of Specification PPP-B-636. The inside dimensions of the export shipping container shall be 46¾ inches in length, 16¼ inches in width, and 24 inches in depth. The requirements for closure and trapping of the export boxes shall conform to the Appendix of PPP-B-636, except that the container flaps shall be glued (not stitched), and the boxes strapped with flat steel straps only. In addition, all corners and joints of the boxes shall be sealed by the application of a 3 inch wide cloth tape conforming to the requirements of type II, class 1, olive drab color of Specification PPP-T-60.

5.2.2 *Level B.* Twenty-five (25) shirts, of one size and class only, packaged as specified in 5.1.1, shall be packed flat, with every three reversed, in a domestic shipping container conforming to the requirements specified in 5.2.2.1.

The top and bottom of each pack of shirts shall be completely covered with a sheet of kraft paper of not less than 30 pounds basis weight (24 by 36-500) conforming to the

MIL-S-40035

requirements for grade B of Specification UU-P-268.

5.2.2.1 Shipping container. The domestic fiberboard shipping container shall conform to the requirements of type I or II, class 1, style CSSC of Specification PPP-B-636. When type I, class 1 containers are used the fiberboard shall be fabricated from B-flute corrugated medium. The minimum bursting strength of the solid or corrugated fiberboard shall be 350 psi. The inside dimensions of the fiberboard shipping container shall be 15½ inches in length, 11¼ inches in width, and 7⅛ inches in depth.

5.2.2.2 Closure. All flaps of the domestic fiberboard shipping container shall be sealed with an adhesive (glue), used commercially for fiberboard containers, by application throughout the entire area of contact between the flaps; or by a combination of metal stitching the bottom flaps and sealing the top flaps with an adhesive (glue).

5.2.3 Level C. The shirts, packaged as specified in 5.1, shall be packed in a manner which will insure acceptance and safe delivery at destination. Shipping containers shall conform to the Consolidated Freight Classification Regulations or to regulations of other carriers as applicable to the mode of transportation.

5.3 Marking. Shipping containers shall be marked in accordance with the requirements of Standard MIL-STD-129.

5.4 Nomenclature. Shirt, Woman's (Chambray).

Custodians:

Army—Quartermaster Corps
Navy—Bureau of Supplies and Accounts
Air Force

Other interests:

Army—M
Navy—MC

6. NOTES

6.1 Intended use. The shirt covered by this specification is intended for wear with the exercise shorts and/or exercise skirt, or slacks.

6.2 Ordering data. Procurement documents should specify the following:

- (a) Title, number, and date of this specification.
- (b) Class and sizes required. (See 1.2.)
- (c) Color required (see 3.3.1.1).
- (d) Availability of guide sample (see 3.1 and 6.3).
- (e) Requirements for sample approval (see 3.2).
- (f) Availability of patterns (see 3.5).
- (g) Sampling and inspection procedure required (see 4.2 and 4.3).
- (h) Selection of applicable levels of packaging and packing (see 5).

6.3 Guide sample. For access to standard sample, address the procuring activity issuing the invitation for bids.

Notice. When Government drawings, specifications, or other data are used for any purpose other than in connection with a definitely related Government procurement operation, the United States Government thereby incurs no responsibility nor any obligation whatsoever; and the fact that the Government may have formulated, furnished, or in any way supplied the said drawings, specifications, or other data is not to be regarded by implication or otherwise as in any manner licensing the holder or any other person or corporation, or conveying any rights or permission to manufacture, use, or sell any patented invention that may in any way be related thereto.

Preparing activity:

Navy—Bureau of Supplies and Accounts

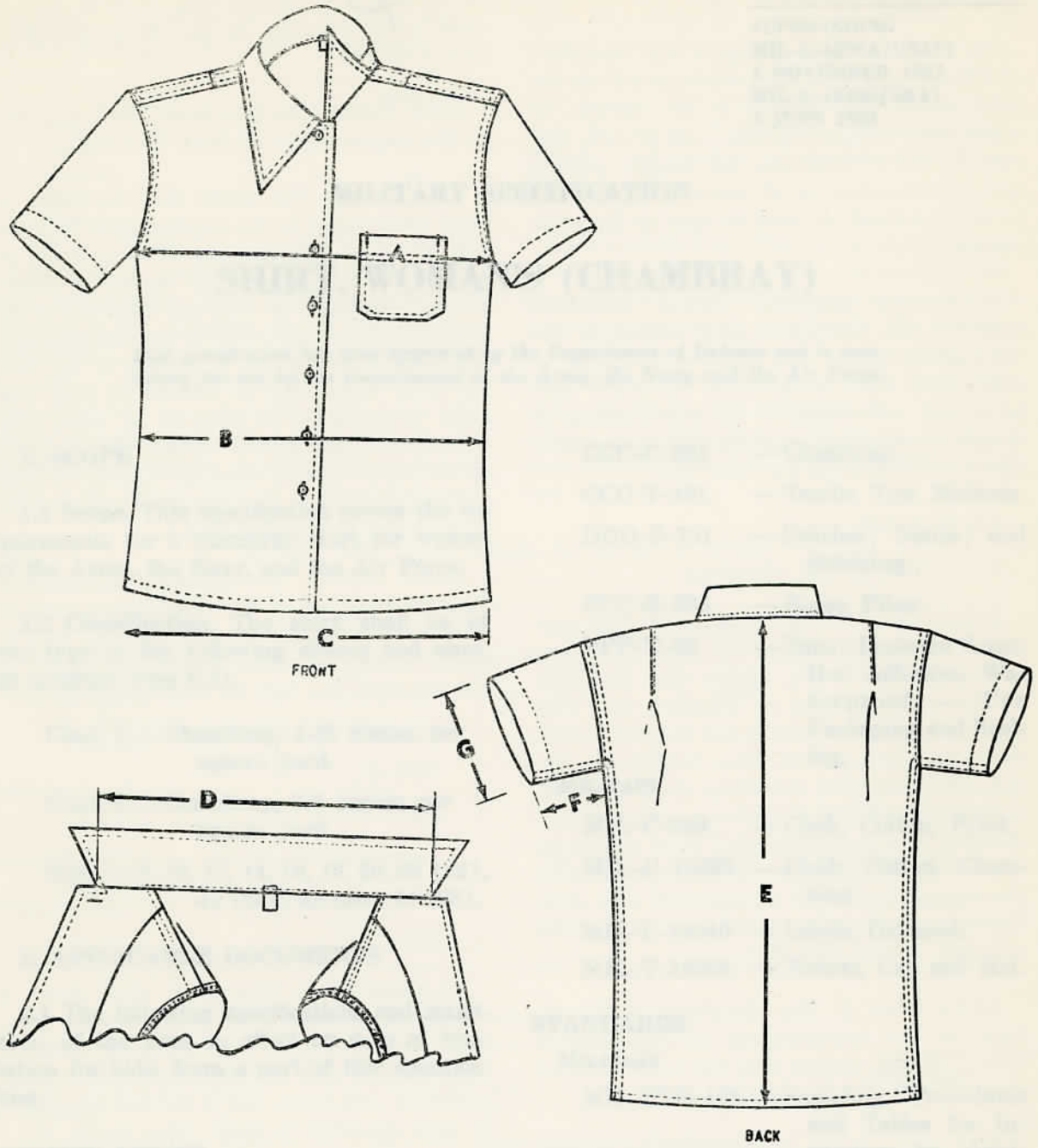


FIGURE 1 - SHIRT, WOMAN'S (CHAMBRAY)